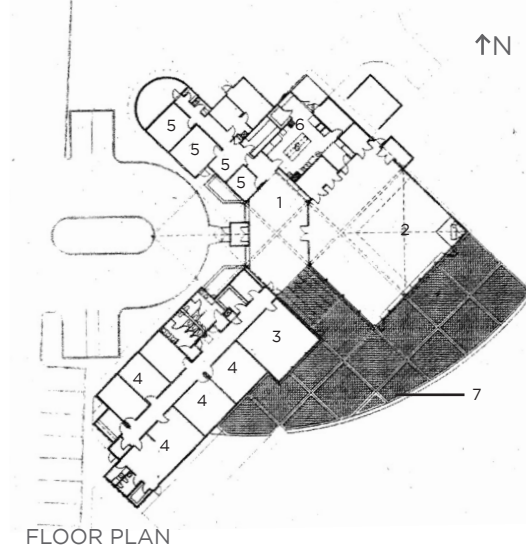
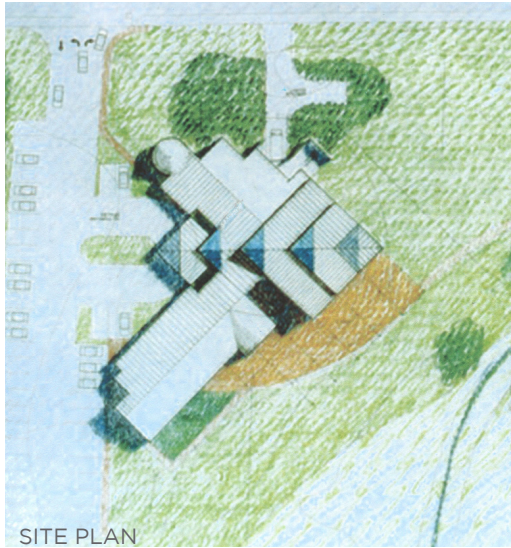


HEVREH OF SOUTHERN BERKSHIRE

Great Barrington, MA



- LEGEND
- 1. Foyer
 - 2. Sanctuary / Social Space
 - 3. Library
 - 4. Classroom
 - 5. Office
 - 6. Kitchen
 - 7. Terrace / Overflow seating

COMPLETION DATE
1998

SIZE
12,000 SF

PROJECT TYPE
New Construction

The design of this new building is an expression of this “hevreh” (community). The Jewish population in Great Barrington has traditionally been a summer phenomenon, multiplying with the seasonal attractions, and Hevreh previously served its fluctuating congregation by borrowing facilities from others.

After 20 years of “wandering,” the congregation felt that the time had come for a permanent home. The challenge was to build a temple that draws worshippers closer together, that invites spiritual reflection, and encourages the community aspirations of the congregation. It also needed to provide space for the growing educational program and community events.

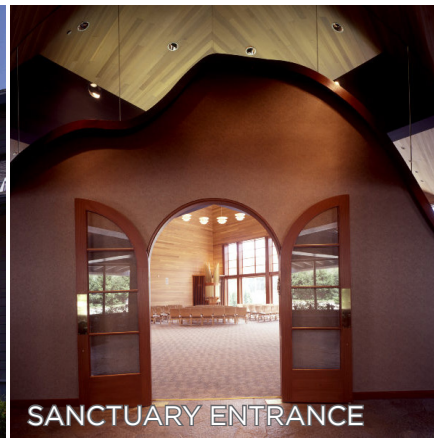
Connecting with the Eastern European wood synagogue, a warm, friendly and inviting character was developed. The siting of the building was framed by a major highway to the North and wetlands and Berkshire mountain views to the South. The architecture was natural, organic, and in scale with the adjacent residential neighborhood.

The building has become a popular venue for many community activities, including concerts from Tanglewood musicians.

HEVREH OF SOUTHERN BERKSHIRE



FRONT EXTERIOR



SANCTUARY ENTRANCE



SANCTUARY



ARK



REAR EXTERIOR

